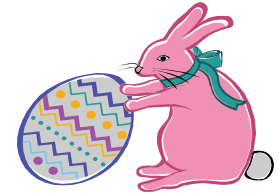




West 1 Field Education Unit 4-H HEADLINE NEWS March 2008



March 2008

West 1 Field Education Unit Educators

Bennett County

Sandy Huber-Ag
Nancy Pauly-FCS
685-6972
bennett@ces.sdstate.edu

Custer County

LaDonna McKnight-YD/4-H
673-4971
custer@ces.sdstate.edu

Fall River County

Sally Park-Hageman-FCS
Mark Fanning-Agronomy
745-5133
fall.river@ces.sdstate.edu

Haakon County

Adele Harty-Livestock
859-2840
haakon@ces.sdstate.edu

Jackson County

Vera Boje-YD/4-H
837-2133
jackson@ces.sdstate.edu

Pennington County

Vacant-YD/4-H
Bill Keck-Horticulture
Ingrid Lindberg-FCS
394-2188

4-H Camp-Mark Your Calendars Now!

Plans are being made-Watch for details coming soon to an Extension Office near you!

Session 1 will be June 16-19-Ziebach/Dewey, Perkins/Harding, Union, Hughes/
Stanley, Lyman

Session 2 will be June 23-26-Haakon/Jackson, Gregory, Tripp, Bennett, Jones/
Mellette, Shannon

Session 3 will be June 27-30-Custer, Fall River, Butte, Lawrence, Meade, Pennington,
Lincoln

Teen Camp/Camp Counselor Training will be held the week of June 9th with details
to follow, but mark your calendars now to save the dates.

Introductory to Range & Pasture Project

Saturday June 7th, 2008, 9:00 am to 3:00 pm. At The Nature Conser-
vancy's Whitney Preserve in Hot Springs, SD

Lessons to be learned: Plant Identification, Plant Classification, Proper
Collection, Press and Mounting plants, Preparation for Exhibit.

Watch for additional information in the coming months, or
for further information contact: Jeff Symstad, jsymstad@tnc.org,
605-745-6990 or Bob Novotny rnovotny@fs.fed.us, 605-745-3586
(evenings).

Encourage A Soldier

South Dakota currently has two National Guard groups deployed. B Battery is
in Iraq and Detachment 48 is near the Pakistani border in Afghanistan. Both
groups would enjoy encouraging notes from 4-H members. If your club would
like to participate, packets of letters may be sent to Attn: Soldier Encourage-
ment, West River Ag Center, 1905 Plaza Blvd, Rapid City SD 57702. If you
would like to continue to correspond with your soldier, be sure to include your
mailing address. These two units include 190 soldiers, so we can use plenty of
letters!



South Dakota
Cooperative Extension Service

Creating Opportunities for a Lifetime

South Dakota State University, South Dakota Counties, & U.S. Depart-
ment of Agriculture Cooperating. South Dakota State University is an
Affirmative Action/Equal Opportunity Employer (male/female) and offers
all benefits, services, education and employment opportunities without
regard for ancestry, age, race, citizenship, color creed, religion, gender,

Help Choose A Theme For The 2008 State Fair

Here's your chance to help us choose a theme for the 2008 State Fair.

Entries must be postmarked by **March 10th**. To enter, send your theme on a clean sheet of paper, along with an illustration idea. Be sure to include your name, 4-H Club, county and address. Mail the entry to Kathryn Reeves, West River Ag Center, 1905 Plaza Blvd, Rapid City SD 57702 or email to katryn.reeves@sdstate.edu.

Illustrations may be line drawings, computer generated, or anything else that will get your idea across. The artistry of the entry is NOT going to be judged, but it will be utilized to help us understand your theme, and might be used when designing the final logo. The winning entry will receive a \$50.00 gift certificate for the 4-H Source Book.



Horse Scholarship Available

The Rapid City Quarter Horse Assoc. is sponsoring a \$1000.00 scholarship to a horse project member that is currently a senior who will graduate this spring. Applicants must be from West River and enrolled in the horse project for the last 3 years. For applications or more information call Patty Brunner at 393-2577 or the Extension Office at 394-2188. **DEADLINE: May 1, 2007.**



Performing Arts

Dates for the 2008 South Dakota 4-H Performing Arts Camp will be Sunday, June 15 through Saturday, June 21 at Northern State University, Aberdeen. Youth who are age 13 by January 1 and older are invited to participate. The registration fee is \$250 per person and due by April 15th. The registration form and additional information about the 25th annual camp will be on the 4-H Website or available at your local County Extension Office.



Rabbit/Cavy Workshop

The Woods and Meadow Rabbit Club is sponsoring it's second annual Rabbit/Cavy Workshop on March 29th from 10:00 am until 3:00 pm. They will be teaching rabbit/cavy showmanship, rabbit/cavy judging, breed ID, tattooing/ear tagging and general care of the rabbit and cavy. Lunch will be served at noon. For further information, please contact Mary at 721-1505 or email marys@rushmore.com.



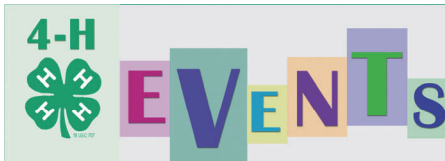
State 4-H Leaders Meeting

The State 4-H Leaders meeting will be April 5th in Watertown at the Codington County Extension Complex. There will be a vehicle from Rapid City traveling there if you would like to ride along. Please contact your local Extension Office for details.

Join us for a GOOD time with your dog!

Region 4-H Dog Project is open to any child 8-18 years old. You can be a 4-H member in ANY county or club to join us. If you are not already a 4-H member, there is an additional fee of \$3 to sign up with the Dog Project specialty club "Extra Ordinary Friends". Dog classes will begin again in June watch the newsletter details. Contact Lois Schmoll 430-7688 for more info.





April 1, State 4-H Scholarship Applications due
 April 5, State 4-H Leaders Meeting-Watertown
 June 3-6, Teen Leadership Conference-Brookings
 July 22-24, State Horse Show

For all listings please check with county offices to confirm dates, times, and locations. 4-H members are always welcome to participate or compete at any county event in any county with a few exceptions.

Bake and Take Day

Bake and Take Day is Saturday, March 22. All you have to do is bake an item using wheat or wheat products and take it to a friend, relative, neighbor, co-worker, service provider, shut-in, just to name a few of the possible recipients. Surprising someone with home baked wheat foods makes them, and you, feel special.

Participants who write in to tell about their Bake and Take Day activities will be entered into a random drawing for \$50 cash in one of the four categories. All eligible entries collected via e-mail and U.S. mail by April 15, 2008 will be included. Participants need to indicate a category — youth individual, youth group, adult individual, and adult group—on the entry form available at your county office.

State 4-H Scholarships Due April 1, 2008

Information is available for youth who want to apply for the State 4-H Scholarships provided through the designated donors of the 4-H Foundation at the SD4-H website. Go to <http://4h.sdstate.edu> and click on 4-H Clubs and then scroll down to trips and scholarships. The details and process are similar to past years. If you have questions, please contact your local Extension Office or visit the State 4-H website.

Extreme Makeover – TLC Edition

Mark your calendars and start saving up! Teen Leadership Conference will run June 3-6 on the SDSU Campus in Brookings. John Paul Murphy, of Maximizing People Potential, will provide the keynote on Tuesday along with a large workshop on Wednesday. There will be bus service available and some sort of performing opportunity for delegates. The registration fee is \$130 until April 15th. Then the fee will be \$160. Registration materials will be



available in March at your local County Extension Office. The promotional brochure is on the 4-H website for further details.

Livestock judging mini-camp available at TLC

The June 3-6 South Dakota Teen Leadership Conference (TLC) will feature an intensive two-day livestock judging camp.

The 62nd South Dakota Teen Leadership Conference will be held at South Dakota State University and features nearly 80 workshops, including the livestock judging mini-camp.

Extension Youth Livestock Project Leader Rod Geppert will present the mini-camp, and up to 50 teens ages 13 to 18 can sign up to take part.

The fee for the mini-camp is \$130 for those who register on or before April 15, and \$160 for those who register after April 15. To register, call (605) 394-2236. Phone registrations will be accepted until March 1.

After March 1, those teens who seek to take part the mini-camp must complete the TLC registration form, selecting the mini-camp option.

To get more information, visit <http://4h.sdstate.edu> and click on the "TLC-Council Ambassadors-Jr. Leadership" link. There, participants can find a link to the TLC 2008 brochure. Or ask for information at your county Extension office.

Geppert has coached nationally ranked judging teams for several years, and his mini-camp will cover market and breeding livestock evaluation, ranking traits, EPD and performance scenarios, note taking, and oral reasons.

Participants who take part in the judging mini-camp will attend sessions during the day. They will lodge, eat, and attend events of the Teen Leadership Conference in the evening.

2008 Horse Form I

Everyone will have to fill out new Horse Forms as there is a new form this year. You will need to fill out a form for each horse you will be exhibiting in the horse project. These forms are due by **MAY 31st** to your local Extension Office.

Horse Safety Training -- IMPORTANT!!!!

All 4-H members enrolled in the Horse Project **MUST** participate in the Horse Safety Training Course **along with a parent.** Members must participate in one of these trainings in order to participate in horse activities!! The training must be completed by May 31st in order to participate in any horse activity in 4-H. Please contact your local Extension Office to find out how these trainings are set up for your county.

IRS Update

The first e-Postcards are due in 2008 for tax years ending on or after December 31, 2007. The e-Postcard is due every year by the 15th day of the 5th month after the close of your tax year. For example, if your tax year ended on December 31, 2007, the E-Postcard is due May 15, 2008. You cannot file the E-Postcard until after your tax year ends. Help sheets will be available in March at your local County Extension Office.

State 4-H Dog Committee Plans

Workshop

4-H members, leaders and parents are invited to bring their dog and attend the S.D. 4-H Dog Project Day March 21-22, 2008 at the Davison County Extension Center in Mitchell, SD. For more information, contact your local Extension Office for a complete schedule.



4-H Shooting Sports

The CMP will be holding an air rifle weeklong camp in Rapid City on June 16-20, 2008. Information regarding this camp is posted on the CMP website. Signup **EARLY!** The CMP website is odcmp.com or contact your local Extension Office.

4-H Community Service Project

The State Community Service Project theme for 2007-2008 is environment. Contact your local Extension Office for a report form. File your report by September 10, 2008. Here are some great ideas:

- *Collect aluminum cans
- *Start a compost pile
- *Ask your school to use recycled paper
- *Check homes for lead based paint or radon levels
- *Clean up trash along a river or creek
- *Make conservation posters for the community
- *Create a campaign to encourage biking & walking
- *Make bird feeders for public places
- *Adopt an acre of a park
- *Adopt highways and clean up clutter
- *Conduct a battery collection drive

State 4-H Shoot

State 4-H Shoot will be April 25-27th in Ft. Pierre.

State 4-H Horse Show

The State 4-H Horse Show will be July 22-24 at the S.D. State Fairgrounds in Huron

Summer Spotlight

The S.D. Summer Spotlight will be held at the State Fairgrounds in Huron, SD on July 25, 26 & 27th, 2008

Pennington County Extension Service
601 E Centre Street
Rapid City, SD 57701
Phone: 605 394-2188
Fax: 604 394-6815

Sincerely:

Vera Boje—Jackson County
Shawn Burke—Shannon County
LaDonna McKnight—Custer County
Youth Development/4-H
Extension Educators



Check Out What's Inside:

- 4-H Camp Dates
- Range and Pasture Workshop
- Encourage a Soldier
- State Fair Theme Contest
- TLC
- Performing Arts Camp
- Bake & Take Day
- Horse Safety Information
- Livestock Judging Camp

St. Patrick's Day